

Rosengrens Callisto

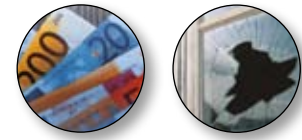
Burglary protection of your valuables



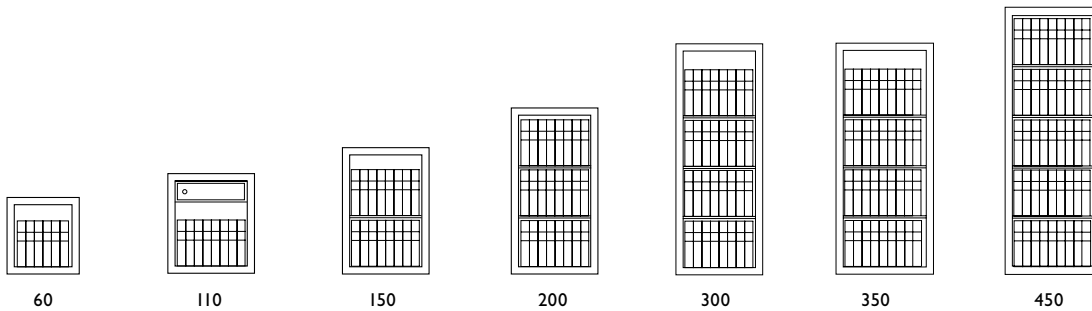
Rosengrens Callisto safes are built using an innovative barrier material which significantly reduces the total weight of the safe but still provides approved burglary protection. Callisto's minimised weight means that the cost of transportation and installation is cut considerably and the installation process is much quicker. The safes are available in seven sizes, from 60 to 450 litres, and can be equipped with a range of high-quality interior fittings to maximise storage.

Rosengrens Callisto

Burglary protection of your valuables



RSGB.1070.R4



Product data

Model	External dimensions (mm)			Internal dimensions (mm)			Weight (kg)	Volume (litres)
	Height	Width	Depth*	Height	Width	Depth		
60	530	500	528	430	400	360	270	62
110	690	600	561	590	500	386	384	114
150	875	600	561	775	500	386	466	150
200	1150	600	561	1050	500	386	579	203
300	1600	600	561	1500	500	386	768	290
350	1600	675	585	1500	575	410	843	354
450	1850	675	616	1750	575	440	981	443

* Dimensions exclude 61mm for handle.

Interior fittings

Shelf
For 60: 20x375x350
For 110–300: 20x475x376
For 350: 20x550x400
For 450: 20x550x430

Extendible shelf
For 110–300: 37x455x376
For 350: 37x530x400
For 450: 20x550x430

Extendible drawer
For 110–300: 100x460x336
For 350: 100x535x360
For 450: 100x535x390

Lockable compartment
For 110–300: 335x467x358
For 350: 335x562x382
For 450: 335x562x412

Extendible file frame
For 110–300: 37x460x376
For 350–450: 37x535x376

Extendible tray
For 110–300: 37x460x361
For 350: 37x535x385
For 450: 37x535x415

Burglary protection: Callisto safes have been tested by leading standards agency, the European Certification Board•Security Systems (ECB•S), and awarded the EN 1143-1 certification for burglary protection in Grade II.

Locks: As standard, Callisto safes come equipped with a high-security, resettable key lock. Callisto can also be fitted with a Class B electronic lock as standard – Rosengrens' REL. REL allows multiple users and has time-delay and wrong-code functions. A combination lock or electronic lock is also available as a secondary lock option from model 110 upwards. The steel boltwork of the solid door has a three-way moving action. Both the locks and the boltwork are protected by reinforced anti-drilling plates and for added security, the boltwork has been fitted with an active re-locker.

Design: With Callisto's innovative barrier material, not only is the safe protected against burglary, but the total weight of the safe is significantly reduced, making it much lighter than other safes of the same class. This cuts both the time and costs involved in transportation and installation, and makes the safes suitable for floors which cannot support heavy loads. In addition, the safe door can be removed on delivery to further accelerate and simplify the installation process.

Callisto has a modern, light-grey finish, suitable for most office environments, and the door handle and other furnishings have been ergonomically designed for ease of use. A full range of high-quality interior fittings is available to maximise use of storage space.

Quality and environmental management systems: Rosengrens Callisto safes are manufactured in accordance with ISO 9001 for quality management systems and ISO 14001 for environmental management systems.

Rosengrens Product Guidelines: The construction of Callisto safes has been tested and approved in accordance with Rosengrens Product Guidelines, based on the relevant European standards. The aim is to check user-friendliness, safety and product lifecycle as an assurance to customers that our products will live up to the highest expectations.